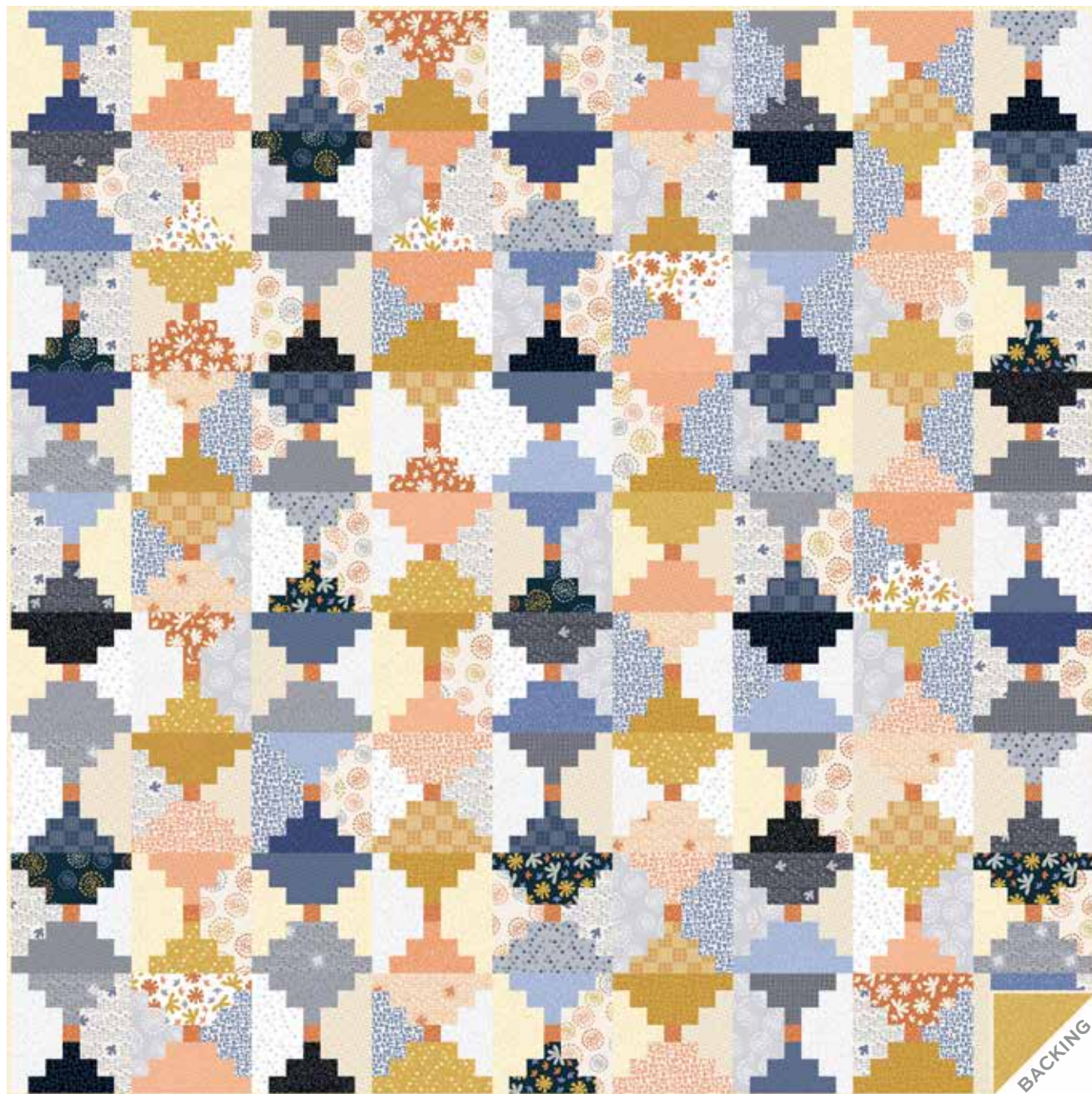


Conway Cottage

KAREN LEWIS



Courthouse Cottage Quilt designed by: **Karen Lewis**
Quilt Size: **63" x 63"** • Skill Level: **Confident Beginner**



Free Pattern Download Available

1384 Broadway, 24th Floor, New York, NY 10018
Tel. (800) 223-5678 • andoverfabrics.com

8/1/24

Courthouse Cottage

Introducing Andover Fabrics new collection: **Conway Cottage** by Karen Lewis

Quilt designed by Karen Lewis

Quilt finishes 63" x 63"

81 Blocks: 7" x 7"

Courthouse Steps, a variation of the traditional Log Cabin block, is constructed by adding strips to opposite sides around the center square instead of the usual block that has logs added around the center in a clockwise manner. The clever placement of the darker fabrics obscures lines between blocks so that "diamond" shapes appear in vertical columns.

Cutting Directions

Note: Read assembly directions before cutting patches. All measurements are cut sizes and include ¼" seam allowances. A fat ¼ is an 18" x 20"-22" cut. WOF designates the width of fabric from selvedge to selvedge (approximately 42" wide).

Cutting for One Block W or Z

First E Fabric

Cut (1) strip 1½" x 7½"

Cut (1) strip 1½" x 5½"

Cut (1) strip 1½" x 3½"

Second E Fabric

Cut (1) strip 1½" x 7½"

Cut (1) strip 1½" x 5½"

Cut (1) strip 1½" x 3½"

Orange Fabric (Fabric 35):

Cut (1) square 1½" x 1½"

Cutting for One Block X or Y

First E Fabric

Cut (1) strip 1½" x 5½"

Cut (1) strip 1½" x 3½"

Cut (1) square 1½" x 1½"

Second E Fabric

Cut (1) strip 1½" x 5½"

Cut (1) strip 1½" x 3½"

Cut (1) square 1½" x 1½"

Orange Fabric (Fabric 35):

Cut (1) square 1½" x 1½"

Additional Cutting

Cutting for ONE Block W:

A & B Fabrics From each:

Cut (1) strip 1½" x 5½"

Cut (1) strip 1½" x 3½"

Cut (1) square 1½" x 1½"

Cutting for ONE Block X:

A & B Fabrics From each:

Cut (1) strip 1½" x 7½"

Cut (1) strip 1½" x 5½"

Cut (1) strip 1½" x 3½"

Cutting for ONE Block Y:

C & D Fabrics From each:

Cut (1) strip 1½" x 7½"

Cut (1) strip 1½" x 5½"

Cut (1) strip 1½" x 3½"

Making the Quilt

When making the blocks, refer to these labels and the list of fabrics on the last page of the pattern.

| | | | |
|-------------------|-------------------|-------------------|-------------------|
| 1 1415-C | 2 1415-K | 3 1415-L | 4 1416-K |
| 5 1416-L | 6 1416-O | 7 1417-B | 8 1417-C |
| 9 1417-L | 10 1417-O | 11 1418-B | 12 1418-L |
| 13 1418-Y | 14 1419-B | 15 1419-C | 16 1419-O |
| 17 1420-B | 18 1420-C | 19 1420-L | 20 1420-O |
| 21 1421-B | 22 1421-K | 23 1421-O | 24 1421-Y |
| 25 1424-B | 26 1424-B1 | 27 1424-C | 28 1424-K |
| 29 1424-L | 30 1424-LB | 31 1424-LC | 32 1424-LO |
| 33 1424-LY | 34 1424-O | 35 1424-O1 | 36 1424-Y |
| 37 1422-LY | | | |

Fabric Requirements

| | Yardage | Fabric |
|--|---------|--------|
|--|---------|--------|

| | | |
|-------------------------------|-------------------|-----------------------------------|
| 7 Lt. Blue (A Fabrics) | blocks fat ¼ each | Fabrics 8, 11, 15, 18, 25, 27, 30 |
|-------------------------------|-------------------|-----------------------------------|

| | | |
|-------------------------------|-------------------|-------------------------------------|
| 8 Dk. Blue (B Fabrics) | blocks fat ¼ each | Fabrics 2, 4, 7, 14, 17, 22, 26, 28 |
|-------------------------------|-------------------|-------------------------------------|

| | | |
|---------------------------|-------------------|-------------------------------|
| 6 Gold (C Fabrics) | blocks fat ¼ each | Fabrics 5, 13, 16, 24, 33, 36 |
|---------------------------|-------------------|-------------------------------|

| | | |
|-----------------------------|-------------------|-------------------------------|
| 6 Orange (D Fabrics) | blocks fat ¼ each | Fabrics 6, 10, 20, 23, 32, 34 |
|-----------------------------|-------------------|-------------------------------|

| | | |
|----------------------------|--------------------|-------------------------------------|
| 8 Light (E Fabrics) | blocks ½ yard each | Fabrics 1, 3, 9, 12, 19, 21, 29, 31 |
|----------------------------|--------------------|-------------------------------------|

| | | |
|-----------------|-------------------|-----------|
| 1 Orange | block ctrs. fat ¼ | Fabric 35 |
|-----------------|-------------------|-----------|

| | | |
|----------------|--------|-----------|
| Binding | ½ yard | Fabric 29 |
|----------------|--------|-----------|

| | | |
|----------------|---------|-----------|
| Backing | 4 yards | Fabric 37 |
|----------------|---------|-----------|

Cutting for ONE Block Z:

C & D Fabrics From each:

Cut (1) strip 1½" x 5½"

Cut (1) strip 1½" x 3½"

Cut (1) square 1½" x 1½"

Cutting for Entire Quilt

Cut strips as needed to make 81 blocks. Read Step 1.

Binding

Cut (7) strips 2½" x WOF for binding

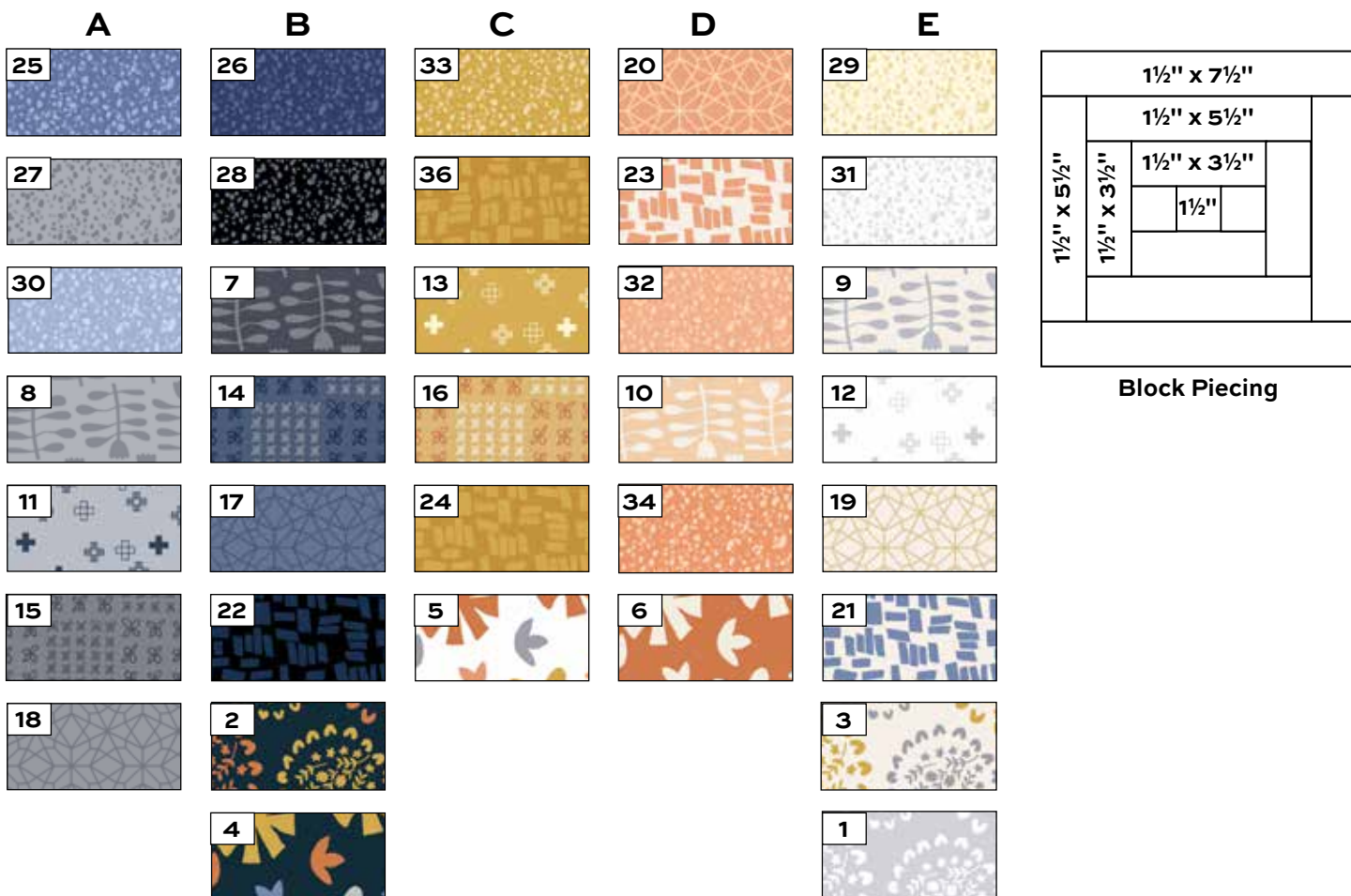
Backing

Cut (2) lengths 37" x 73", pieced to fit quilt top with overlap on all sides

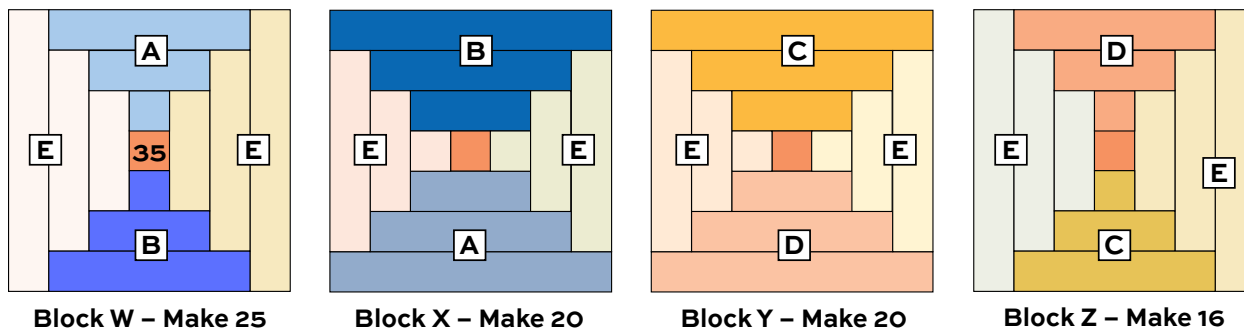
Courthouse Cottage Quilt

Making the Quilt

- The fabrics are divided into 5 color families labeled A-E. These labels are used in the cutting lists and the diagrams to indicate which fabrics are used in each block. The blocks are scrappy in that every block is different. Each Block W and X uses 2 lights (Fabric E), a light blue (A), and a dark blue (B), plus the Fabric 35 center square. Each Block Y and Z uses 2 lights, a gold (C) and an orange (D), plus the orange center square.



- Refer to the cutting list for a W Block and the block piecing diagram. Cut the strips needed for a Block W. Sew Fabric A and B 1 1/2" squares to the center orange square. Sew Fabric E 3 1/2" strips to the center. Add all the strips, pressing seam allowances away from the center. The block should measure 7 1/2" from edge to edge. If it does not, adjust your stitching and pressing techniques as necessary.



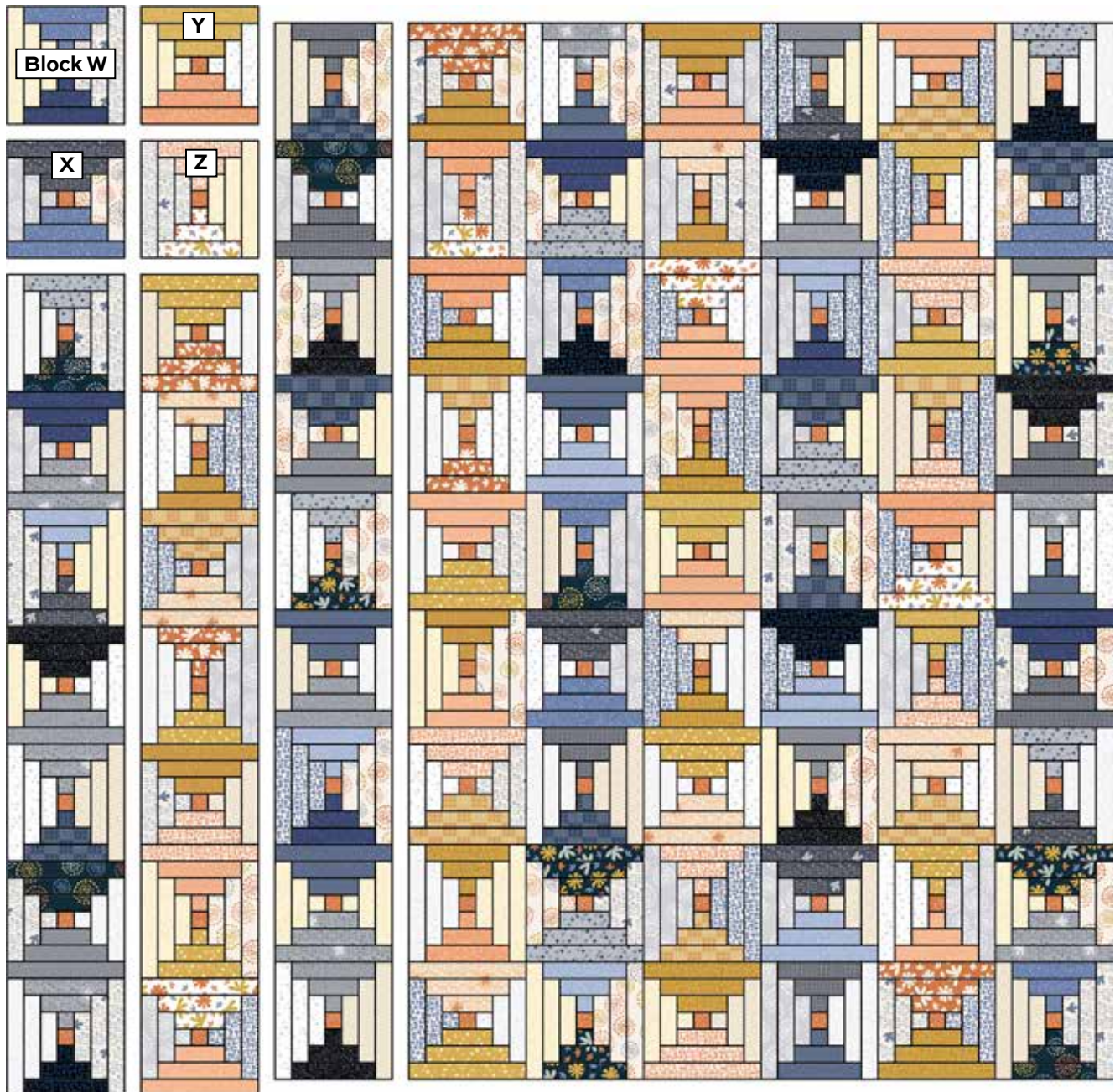
Courthouse Cottage Quilt

3. Continue in this manner to make the number of blocks shown in the block diagrams, a total of 81 blocks. Refer to the quilt for ideas for fabric combinations, and feel free to come up with your own combos.
4. Referring to the Quilt Assembly, arrange the blocks in 9 vertical columns of 9 blocks each. Blocks W and X alternate in columns 1, 3, 5, 7, and 9. Blocks Y and Z alternate in the even numbered columns. Pay attention to the orientation of the blocks so that “diamond” shapes appear where blocks meet. Stand back before joining blocks to be certain that the design is correct.

Looking through a camera may help you find blocks that are out of order. Once you are satisfied with the placement, join the blocks into columns. Press seam allowances in opposite directions in alternating columns, or press open. Join the columns, pressing seam allowances open.

Finishing the Quilt

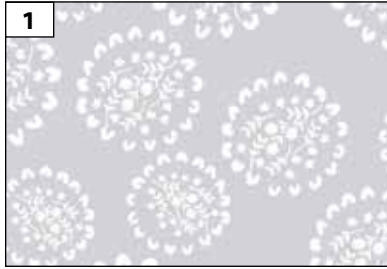
5. Layer the quilt with batting and backing and baste. Quilt in the ditch around patches. Or, quilt an overall pattern. Bind to finish the quilt.



Quilt Assembly

Conway Cottage KAREN LEWIS

Additional fabric from **Freckles** by Karen Lewis



1415-C



1415-K



1415-L



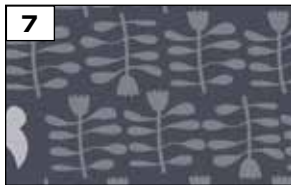
1416-K



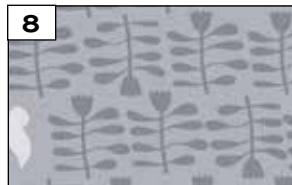
1416-L



1416-O



1417-B



1417-C



1417-L



1417-O



1418-B



1418-L



1418-Y



1419-B



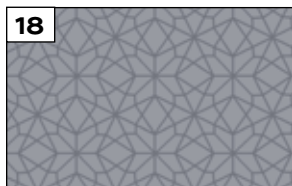
1419-C



1419-O



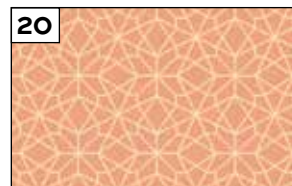
1420-B



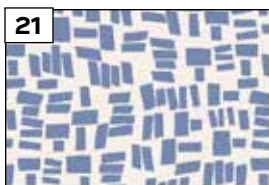
1420-C



1420-L



1420-O



1421-B



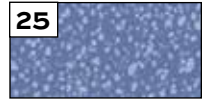
1421-K



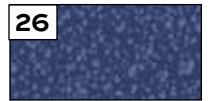
1421-O



1421-Y



1424-B



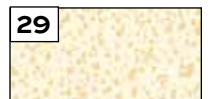
1424-B1



1424-C



1424-K



1424-L



1424-LB



1424-LC



1424-LO



1424-LY



1424-O

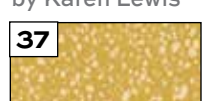


1424-O1



1424-Y

Additional fabric from **CONWAY COTTAGE 108s** by Karen Lewis



1422-LY-Backing

All fabrics are used in quilt pattern. Fabrics shown are 50% of actual size.



Free Pattern Download Available
1384 Broadway, 24th Floor, New York, NY 10018
Tel. (800) 223-5678 • andoverfabrics.com